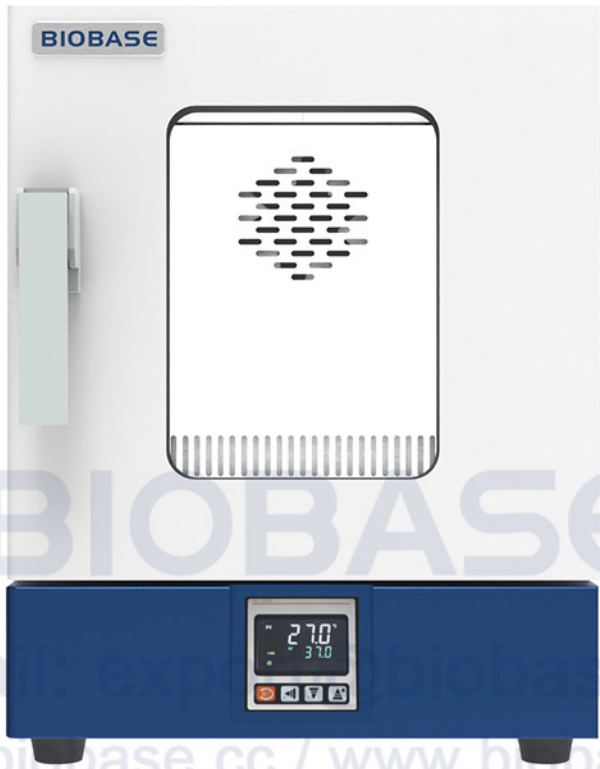


Constant-Temperature Incubator

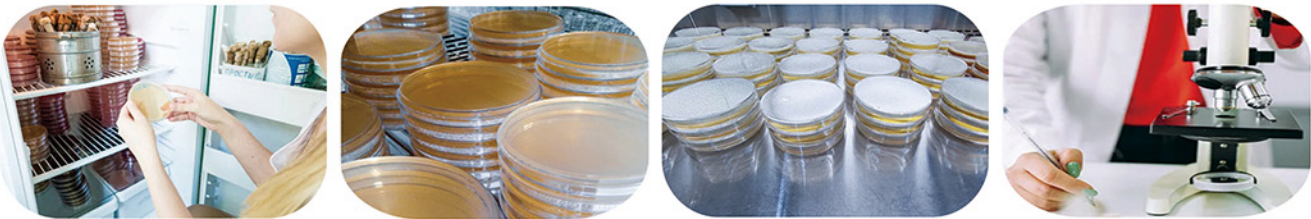


Introduction:

The constant temperature incubator provides stable temperature control and can accurately adjust the temperature within a certain temperature range to meet different experimental needs.

Applications:

This series of products can be used for scientific research such as storing strains and biological cultivation in laboratories and laboratories of scientific research institutions, colleges and universities, biology and agriculture.



Features:

- * Clever integration greatly improves product quality.
- * Unique air duct design makes the temperature more uniform.
- * The studio adopts a semicircular four-corner design for easy cleaning.
- * The inner cavity is filled with high-quality insulation cotton on all sides, which has a good insulation effect.
- * PT100 temperature sensor ensures that the product has extremely high reliability.
- * Equipped with leakage current and overvoltage protectors.
- * With over-temperature alarm, the alarm will be activated when the temperature in the box exceeds the set temperature.
- * Add a temperature control switch. When the temperature is too high, the switch is disconnected to prevent damage to the instrument caused by excessive temperature.



Technical Parameters:

Model	BJPX-H30L
Capacity	30L
Temperature Sensor	PT100
Temperature Range	RT+5~85°C
Temperature Fluctuation	±0.2°C (@37°C)
Temperature Uniformity	±0.5°C (@37°C)
Temperature Precision	0.1°C
Timing Range	0~9999min/h
Display	LCD
Power Supply	AC 220V, 50/60Hz(Standard); 110V, 50/60Hz(Optional)
Consumption	150W
Shelves	2pcs
Standard Accessories	Shelf
Optional Accessories	Shelf, footmaster caster
Internal Size(W*D*H)	310*310*310mm
External Size(W*D*H)	432*538*570mm
Package Size(W*D*H)	510*680*620mm
Net Weight	28kg
Gross Weight	40kg